

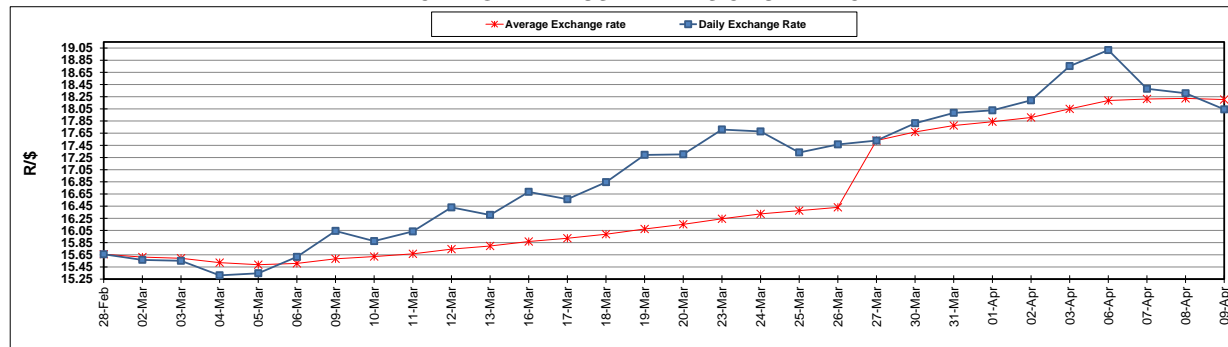
	PETROL 95 ULP	PETROL 93 ULP & LRP	DIESEL 0.05%	DIESEL 0.005%	ILL. PAR.
GAUTENG PUMP PRICE (SA c/l) AS FROM 01/04/2020	1,396.000	1,376.000	-	-	-
WHOLESALE PRICE (SA c/l) AS FROM 01/04/2020	-	-	1,269.560	1,273.960	672.828
SINGLE NATIONAL MAXIMUM RETAIL PRICE	-	-	-	-	840.000
BASIC FUEL PRICE - 09/04/2020 (SA c/l)	303.844	300.112	422.448	432.553	308.557
PRESS RELEASE CONTRIBUTION TO BFP 01/04/2020 - 09/04/2020 (SA c/l)	448.770	438.770	518.630	523.030	468.128
UNIT OVER/(UNDER) RECOVERY - 09/04/2020 (SA c/l)	144.926	138.658	96.182	90.477	159.571
AVERAGE BASIC FUEL PRICE 27/03/2020 - 09/04/2020	314.179	309.282	448.477	456.284	331.490
AVERAGE UNIT OVER/(UNDER) RECOVERY 27/03/2020 - 09/04/2020	200.351	191.648	119.653	116.546	196.038

### ANALYSIS MOVEMENT OF AVERAGE OVER/(UNDER) RECOVERY

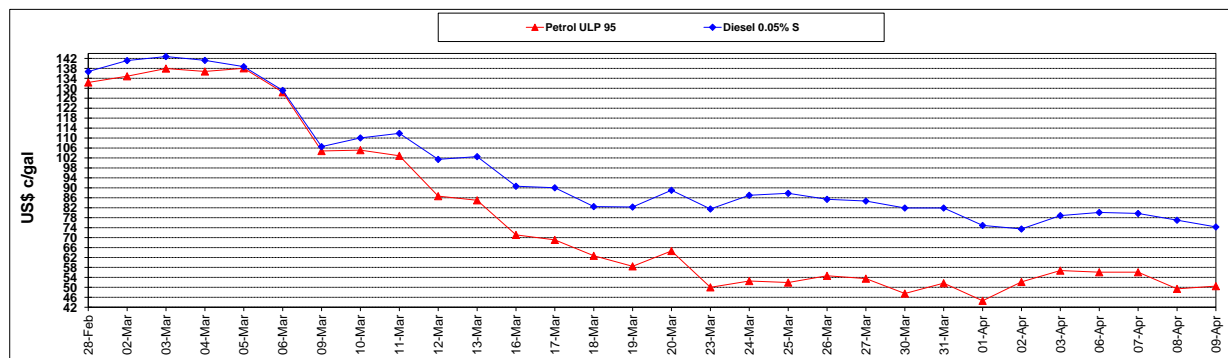
	PETROL 95	PETROL 93	DIESEL 0.05%	DIESEL 0.005%	ILL. PAR.
- MOVEMENT IN INTERNATIONAL PRODUCT PRICES	230.959	221.779	163.345	160.999	228.333
- MOVEMENT IN EXCHANGE RATE	(30.608)	(30.131)	(43.692)	(44.453)	(32.295)
AVERAGE UNIT OVER/(UNDER) RECOVERY 27/03/2020 - 09/04/2020	200.351	191.648	119.653	116.546	196.038

### R/\$ EXCHANGE RATE - (R/\$18.0420 - 09/04/2020)

#### EXCHANGE RATE USED IN BASIC FUEL PRICE



#### INTERNATIONAL PRODUCT PRICES OF BASKET USED IN BASIC FUEL PRICE



#### BASIC FUEL PRICE IN SA CENTS PER LITRE

